

EU Pigmeat Market Situation

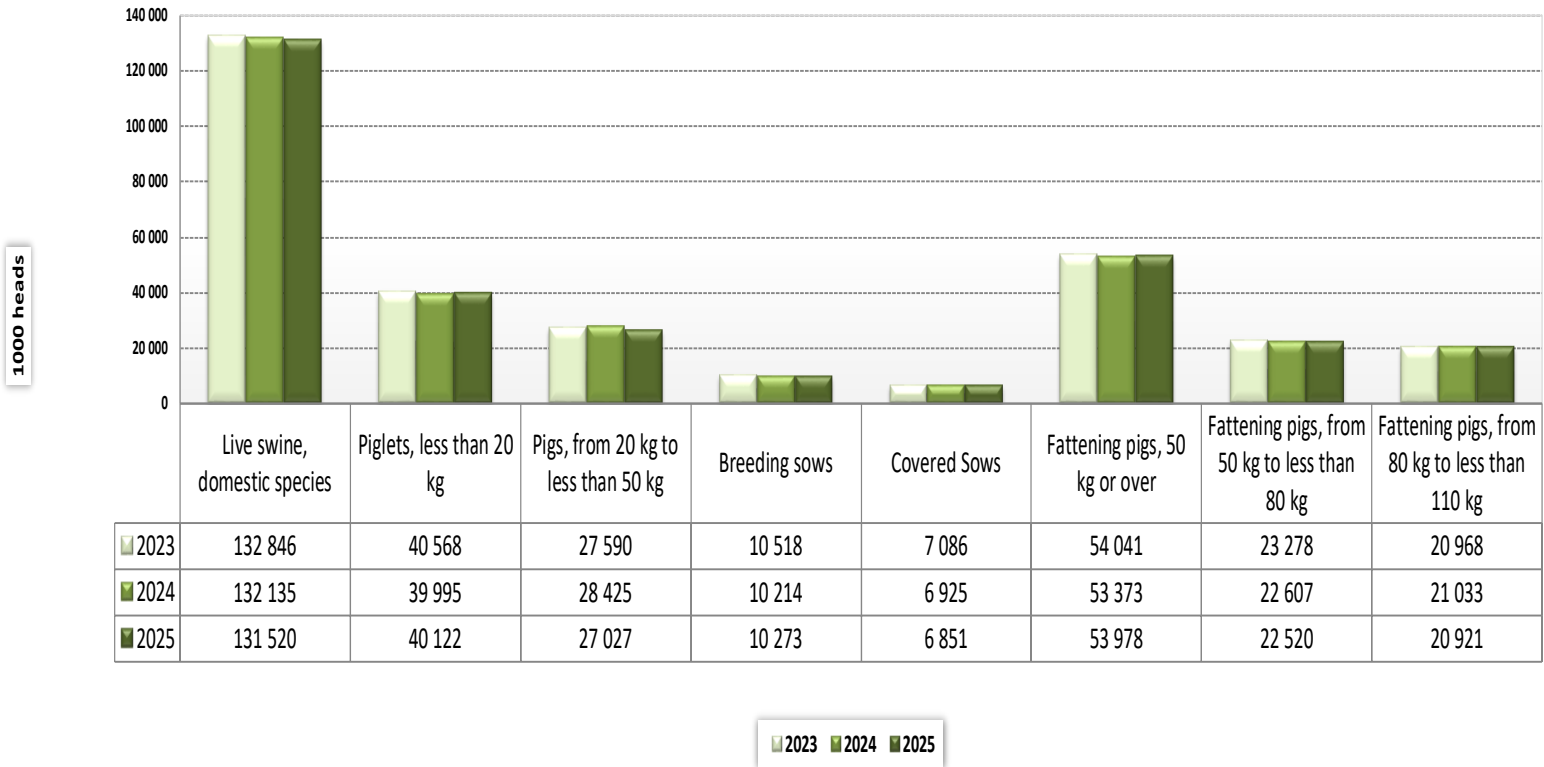
18 June 2026



LIVESTOCK

DECEMBER SURVEY (1000 heads)

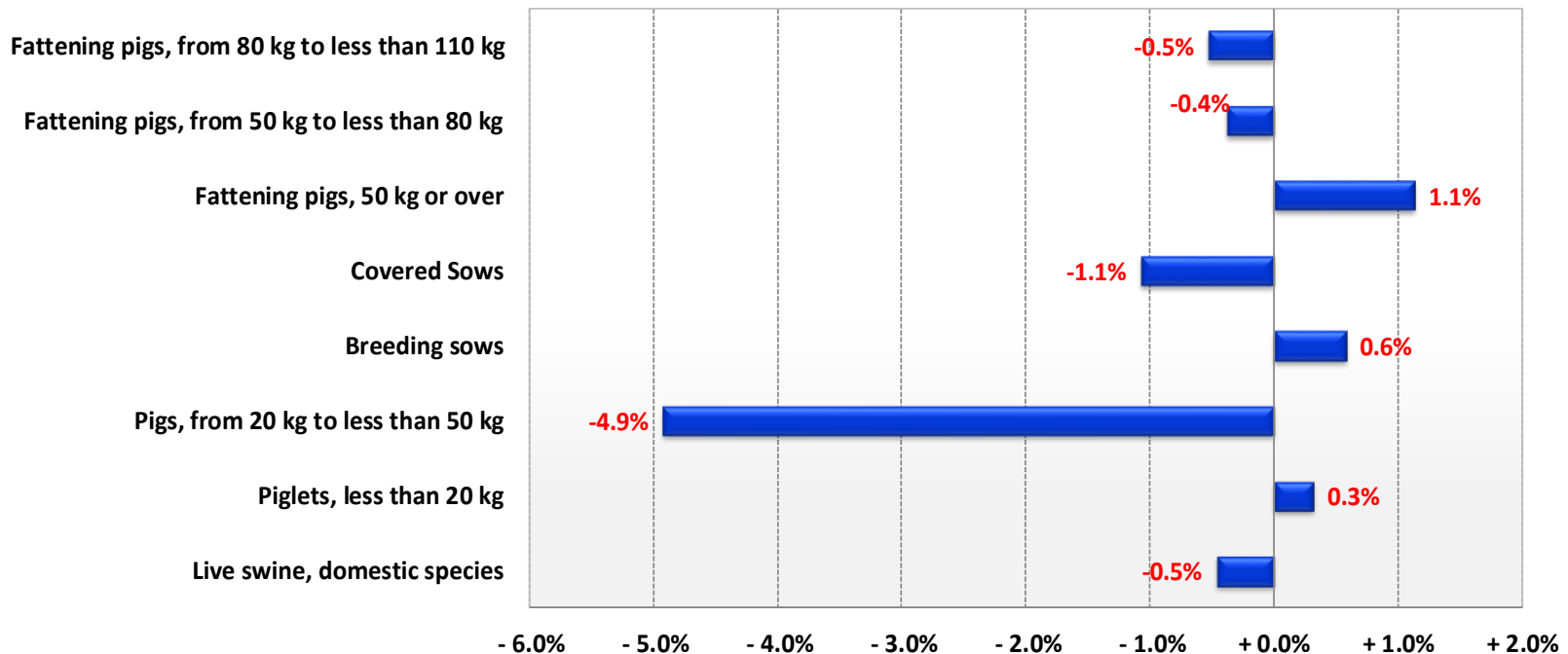
Pig population - Livestock survey December 2025



Source: Eurostat

LIVESTOCK DECEMBER SURVEY (1000 heads)

Change in pig population - Livestock survey December 2025 compared to December 2024



Source: Eurostat

LIVESTOCK DECEMBER SURVEY (1000 heads)

Live swine, domestic species

% Var
2025
2024

2023 2024 2025

Piglets, live weight of under 20 kg

% Var
2025
2024

2023 2024 2025

Breeding pigs

% Var
2025
2024

2023 2024 2025

Breeding sows, live weight 50 kg or over

% Var
2025
2024

2023 2024 2025

Covered sows

% Var
2025
2024

2023 2024 2025

	2023	2024	2025	% Var 2025 2024	2023	2024	2025	% Var 2025 2024	2023	2024	2025	% Var 2025 2024	2023	2024	2025	% Var 2025 2024	2023	2024	2025	% Var 2025 2024
BE	5 380	5 375	5 230	- 2.7%	1 485	1 504	1 484	- 1.3%	354	345	338	- 1.9%	350	342	335	- 2.0%	287	279	274	- 1.7%
BG	725	701	718	+ 2.5%	164	176	156	- 11.5%	80	71	71	+ 0.6%	80	70	71	+ 0.8%	45	36	37	+ 4.5%
CZ	1 362	1 422	1 451	+ 2.1%	377	399	395	- 1.0%	121	126	126	+ 0.0%	120	125	125	- 0.0%	74	76	78	+ 2.6%
DK	11 368	11 583	12 274	+ 6.0%	4 142	4 269	4 447	+ 4.2%	1 142	1 169	1 199	+ 2.6%	1 133	1 159	1 190	+ 2.7%	704	719	728	+ 1.3%
DE	21 224	21 292	21 489	+ 0.9%	6 411	6 326	6 623	+ 4.7%	1 415	1 421	1 433	+ 0.9%	1 400	1 398	1 418	+ 1.4%	1 005	1 006	1 031	+ 2.4%
EE	275	284	198	- 30.3%	98	93	49	- 47.2%	24	24	14	- 41.5%	24	23	14	- 41.8%	18	18	11	- 41.9%
IE	1 408	1 474	1 557	+ 5.6%	363	386	356	- 7.9%	127	122	137	+ 11.9%	126	121	136	+ 11.8%	81	81	92	+ 13.8%
EL	772	786	782	- 0.5%	184	202	202	- 0.2%	91	102	101	- 1.2%	87	99	98	- 0.9%	48	50	49	- 1.2%
ES	33 803	34 565	33 646	- 2.7%	10 731	9 914	10 078	+ 1.6%	2 790	2 637	2 706	+ 2.7%	2 766	2 611	2 678	+ 2.6%	1 783	1 770	1 706	- 3.6%
FR	11 794	11 715	11 644	- 0.6%	4 332	4 316	4 326	+ 0.2%	860	844	823	- 2.5%	852	836	816	- 2.5%	596	581	562	- 3.2%
HR	853	873	877	+ 0.5%	228	252	255	+ 1.2%	87	92	80	- 13.0%	85	90	78	- 13.3%	37	38	35	- 7.9%
IT	9 171	7 820	7 871	+ 0.6%	1 680	1 879	1 896	+ 0.9%	673	615	621	+ 1.0%	649	597	603	+ 1.0%	536	487	492	+ 1.1%
CY	310	310	336	+ 8.4%	112	114	123	+ 7.5%	27	26	26	+ 1.6%	26	25	26	+ 2.0%	23	23	23	+ 1.9%
LV	290	300	308	+ 2.5%	53	58	63	+ 10.2%	37	37	37	- 1.7%	36	37	36	- 1.6%	14	14	14	+ 2.8%
LT	497	497	479	- 3.6%	98	99	87	- 12.9%	40	40	38	- 5.4%	40	40	37	- 5.3%	31	31	12	- 63.0%
LU	65	65	63	- 2.7%	9	8	9	+ 16.3%	3	3	3	- 11.2%	3	3	3	- 11.1%	2	2	2	- 7.8%
HU	2 608	2 802	2 870	+ 2.4%	693	732	762	+ 4.2%	234	251	262	+ 4.8%	232	248	260	+ 4.8%	158	168	167	- 0.5%
MT	36	37	29	- 23.0%	9	9	7	- 24.4%	3	2	2	- 3.2%	3	2	2	- 3.4%	2	2	2	- 3.4%
NL	10 375	10 192	9 419	- 7.6%	4 498	4 600	4 053	- 11.9%	917	806	748	- 7.2%	910	801	744	- 7.1%	563	501	470	- 6.1%
AT	2 516	2 534	2 479	- 2.2%	605	615	601	- 2.3%	207	205	199	- 2.9%	204	201	196	- 2.7%	145	140	137	- 2.2%
PL	9 770	9 078	9 225	+ 1.6%	2 007	1 780	1 841	+ 3.4%	674	610	628	+ 2.9%	663	600	618	+ 3.1%	456	411	428	+ 4.0%
PT	2 181	2 193	2 249	+ 2.6%	834	812	859	+ 5.8%	225	226	228	+ 0.8%	221	222	224	+ 1.0%	149	150	150	+ 0.2%
RO	3 154	3 258	3 337	+ 2.4%	610	569	585	+ 2.8%	277	319	328	+ 2.6%	273	315	323	+ 2.6%	169	179	183	+ 2.3%
SI	196	232	223	- 4.2%	43	48	42	- 13.0%	13	16	16	+ 1.1%	13	15	15	+ 1.7%	8	9	10	+ 2.5%
SK	403	412	447	+ 8.3%	166	179	185	+ 3.0%	36	40	40	- 0.1%	35	40	40	+ 0.0%	20	20	28	+ 34.9%
FI	984	974	964	- 1.1%	304	299	297	- 0.7%	85	84	82	- 2.2%	84	83	81	- 2.1%	61	60	59	- 2.2%
SE	1 326	1 360	1 356	- 0.3%	334	354	344	- 2.9%	106	111	108	- 2.9%	105	109	106	- 2.8%	71	74	72	- 3.8%
EU	132 846	132 135	131 520	- 0.5%	40 568	39 995	40 122	+ 0.3%	10 647	10 341	10 393	+ 0.5%	10 518	10 214	10 273	+ 0.6%	7 086	6 925	6 851	- 1.1%



LIVESTOCK DECEMBER SURVEY (1000 heads)

	Sows covered for the first time				Sows, not covered				Gilts not yet covered				Pigs, from 20 kg to less than 50 kg				Pigs of less than 50 kg live weight			
	2023	2024	2025	% Var 2025 2024	2023	2024	2025	% Var 2025 2024	2023	2024	2025	% Var 2025 2024	2023	2024	2025	% Var 2025 2024	2023	2024	2025	% Var 2025 2024
BE	51	51	53	+ 4.2%	63	63	61	- 3.1%	34	31	30	- 3.7%	940	1 006	1 040	+ 3.4%				2 524
BG	14	10	5	- 47.2%	34	35	33	- 3.1%	12	13	10	- 26.2%	171	185	193	+ 4.1%				193
CZ	18	20	20	+ 2.9%	46	48	46	- 4.2%	22	24	23	- 6.1%	332	336	334	- 0.8%				334
DK	174	179	182	+ 1.7%	429	440	462	+ 5.0%	209	216	234	+ 8.3%	3 527	3 636	3 845	+ 5.8%				3 845
DE	165	163	165	+ 1.4%	395	392	387	- 1.4%	166	168	172	+ 2.0%	3 832	3 729	4 243	+ 13.8%				4 243
EE	2	3	3	- 4.3%	6	5	3	- 41.2%	5	4	2	- 61.3%	45	53	38	- 28.8%				38
IE	18	17	18	+ 1.5%	45	41	44	+ 7.8%	15	16	14	- 15.8%	369	373	302	- 19.1%				302
EL	18	13	13	- 0.8%	39	49	49	- 0.8%	9	10	9	- 3.1%	183	188	187	- 0.3%				187
ES	314	278	329	+ 18.3%	983	841	972	+ 15.6%	391	320	405	+ 26.7%	7 112	8 617	6 556	- 23.9%				6 556
FR	108	108	101	- 6.7%	256	256	253	- 1.0%	103	105	99	- 5.5%	1 765	1 674	1 625	- 2.9%				1 625
HR	7	7	7		48	52	43	- 17.3%	11	12	9	- 25.0%	147	140	147	+ 5.0%				147
IT	96	91	91	+ 0.5%	114	110	111	+ 0.5%	49	45	45	+ 0.4%	1 761	1 222	1 230	+ 0.7%				1 230
CY	4	3	3	- 5.0%	3	3	3	+ 2.3%	2	2	2	+ 4.3%	61	62	64	+ 2.1%				64
LV	4	4	4	+ 2.9%	22	23	22	- 4.3%	15	16	15	- 7.5%	90	87	90	+ 3.9%				90
LT	6	6	5	- 13.7%	8	8	26	+ 209.8%	7	7	6	- 13.1%	139	135	133	- 1.5%				133
LU	0	0	0		1	1	1	- 18.4%	0	0	0	+ 16.0%	19	18	16	- 12.3%				16
HU	34	33	31	- 4.6%	73	81	93	+ 16.0%	44	43	53	+ 22.1%	528	585	616	+ 5.3%				616
MT	0	0	0	- 3.8%	0	0	0	- 3.2%	0	0	0	- 3.2%	9	10	7	- 24.4%				7
NL	108	89	96	+ 7.6%	348	300	274	- 8.8%	144	118	111	- 6.2%	1 454	1 425	1 305	- 8.4%				1 305
AT	20	20	20	+ 1.9%	59	62	59	- 4.0%	20	21	21	- 2.0%	642	628	621	- 1.0%				621
PL	77	69	78	+ 13.4%	207	188	190	+ 1.1%	50	42	49	+ 15.5%	2 836	2 616	2 713	+ 3.7%				2 713
PT	31	32	33	+ 3.6%	72	72	74	+ 2.6%	26	26	28	+ 6.4%	395	372	378	+ 1.4%				378
RO	39	47	48	+ 2.5%	104	136	140	+ 3.1%	44	43	45	+ 2.5%	565	635	651	+ 2.5%				651
SI	2	2	2	- 10.0%	5	6	6	+ 0.5%	1	2	2	+ 11.9%	33	48	47	- 2.1%				47
SK	4	5	6	+ 10.4%	15	19	12	- 36.7%	6	7	6	- 18.9%	74	71	81	+ 14.9%				81
FI	12	12	12	- 2.7%	23	23	22	- 1.9%	14	14	13	- 1.9%	229	227	227	- 0.1%				227
SE	24	22	21	- 2.2%	34	35	35	- 0.6%	22	22	22	+ 0.5%	330	347	340	- 1.9%				340
EU	1 351	1 283	1 347	+ 5.0%	3 434	3 289	3 422	+ 4.1%	1 421	1 326	1 421	+ 7.1%	27 590	28 425	27 027	- 4.9%				28 511



LIVESTOCK DECEMBER SURVEY (1000 heads)

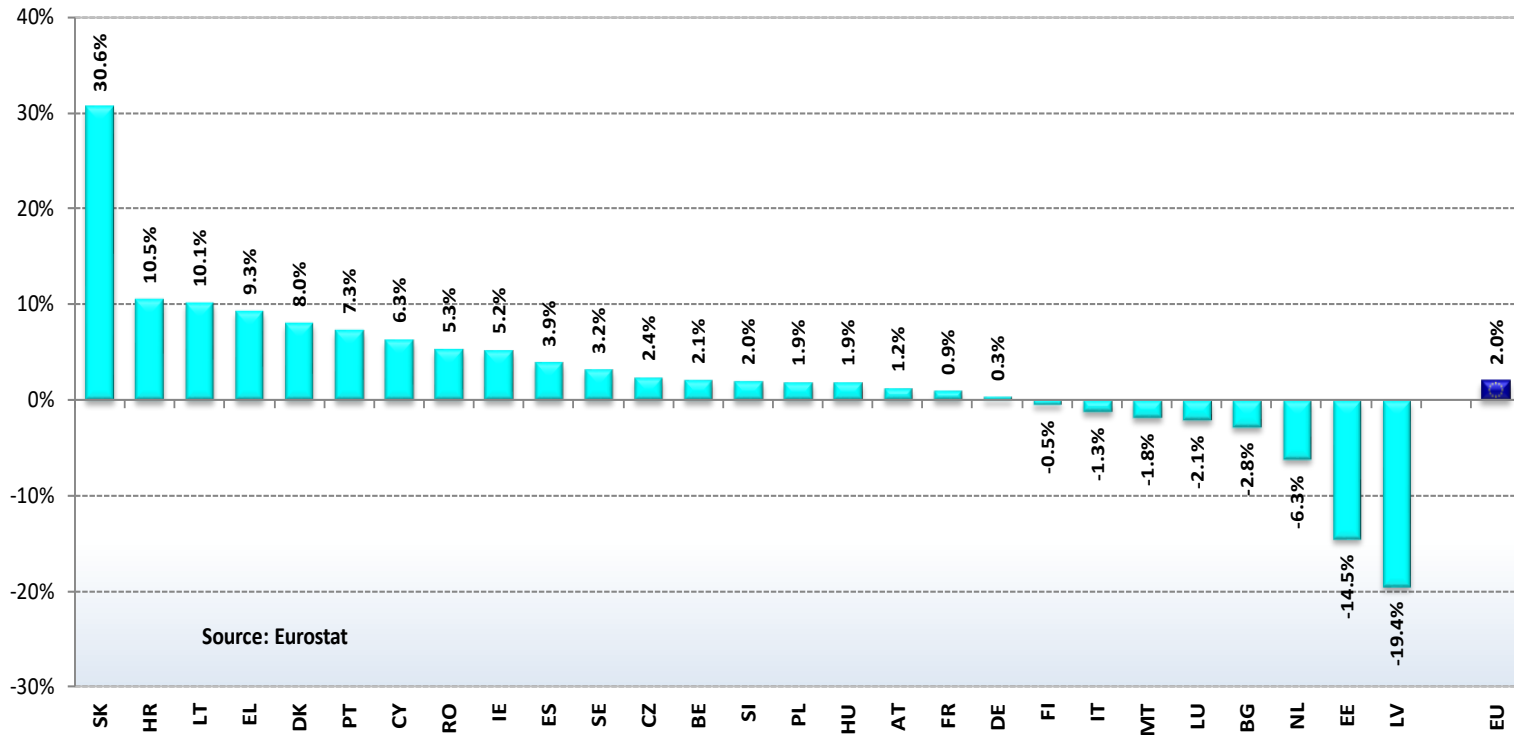
	Fattening pigs, live weight 50 kg or over				Fattening pigs, from 50 kg to less than 80 kg				Fattening pigs, from 80 kg to less than 110 kg				Fattening pigs, live weight 110 kg or over				Breeding boars			
	2023	2024	2025	% Var 2025 2024	2023	2024	2025	% Var 2025 2024	2023	2024	2025	% Var 2025 2024	2023	2024	2025	% Var 2025 2024	2023	2024	2025	% Var 2025 2024
BE	2 601	2 521	2 369	- 6.0%	1 156	1 136	1 073	- 5.6%	1 140	1 083	1 041	- 3.8%	305	302	254	- 15.8%	4	3	3	+ 11.9%
BG	309	268	298	+ 11.0%	156	137	101	- 26.0%	149	127	189	+ 49.1%	4	5	8	+ 63.1%	1	1	1	- 13.6%
CZ	533	561	597	+ 6.4%	243	257	287	+ 11.8%	236	237	245	+ 3.5%	54	68	65	- 3.8%	1	1	1	+ 2.8%
DK	2 557	2 509	2 783	+ 10.9%	2 042	2 002	2 222	+ 10.9%	510	501	555	+ 10.9%	5	6	6		9	10	9	- 10.0%
DE	9 566	9 817	9 190	- 6.4%	4 226	4 395	4 165	- 5.3%	4 174	4 225	3 956	- 6.4%	1 166	1 196	1 070	- 10.6%	15		16	
EE	107	114	97	- 14.7%	48	78	42	- 46.2%	42	30	41	+ 33.4%	17	5	14	+ 206.6%	0	0	0	- 16.7%
IE	549	592	763	+ 28.8%	277	295	346	+ 17.0%	234	242	349	+ 44.1%	38	55	68	+ 24.7%	1	1	1	+ 32.1%
EL	314	294	293	- 0.5%	156	141	140	- 0.4%	118	116	115	- 0.6%	40	38	37	- 0.8%	4	3	2	- 12.0%
ES	13 171	13 397	14 306	+ 6.8%	5 258	5 107	5 119	+ 0.2%	5 482	6 044	6 171	+ 2.1%	2 431	2 246	3 016	+ 34.3%	24	25	28	+ 11.4%
FR	4 837	4 881	4 871	- 0.2%	2 153	2 184	2 203	+ 0.9%	1 956	1 963	1 909	- 2.8%	728	734	758	+ 3.3%	8	7	7	+ 1.0%
HR	391	389	395	+ 1.5%	134	117	76	- 35.0%	86	93	102	+ 9.7%	171	179	217	+ 21.2%	2	2	2	
IT	5 057	4 104	4 124	+ 0.5%	1 480	902	906	+ 0.5%	1 307	894	898	+ 0.5%	2 270	2 309	2 320	+ 0.5%	23	18	18	
CY	110	106	123	+ 15.7%	58	55	56	+ 1.9%	51	50	51	+ 1.4%	1	1	16	+ 1021.2%	0	0	0	- 29.0%
LV	110	119	118	- 0.9%	62	66	66	- 0.9%	45	49	48	- 0.9%	3	4	3	- 1.1%	0	0	0	- 6.5%
LT	220	222	221	- 0.4%	128	123	120	- 1.7%	68	78	80	+ 3.1%	25	22	21	- 4.8%	0	0	0	- 12.9%
LU	34	35	35	- 1.1%	13	14	15	+ 5.5%	16	14	12	- 14.1%	5	7	8	+ 12.4%	0	0	0	
HU	1 153	1 235	1 229	- 0.4%	467	508	492	- 3.2%	469	471	483	+ 2.4%	217	256	255	- 0.3%	2	2	2	- 4.5%
MT	15	15	12	- 24.4%	9	9	7	- 24.4%	5	5	4	- 24.4%	1	1	1	- 24.7%	0	0	0	- 10.0%
NL	3 506	3 361	3 315	- 1.4%	1 489	1 431	1 347	- 5.9%	1 413	1 360	1 298	- 4.5%	605	570	669	+ 17.4%	6	5	4	- 25.4%
AT	1 062	1 088	1 058	- 2.7%	505	513	501	- 2.2%	431	442	421	- 4.8%	126	133	137	+ 2.4%	3	3	3	- 11.9%
PL	4 253	4 072	4 044	- 0.7%	1 865	1 716	1 797	+ 4.7%	1 701	1 683	1 606	- 4.6%	687	672	641	- 4.6%	11	10	9	- 8.3%
PT	727	782	784	+ 0.2%	418	408	413	+ 1.2%	269	328	322	- 1.6%	40	46	48	+ 3.9%	4	5	5	- 9.1%
RO	1 703	1 735	1 774	+ 2.3%	457	524	536	+ 2.4%	622	554	567	+ 2.3%	623	657	671	+ 2.1%	4	5	5	+ 2.1%
SI	107	121	118	- 2.2%	26	44	34	- 21.9%	29	35	43	+ 20.9%	52	41	41	- 1.0%	0	1	0	- 15.7%
SK	127	122	141	+ 15.1%	58	47	51	+ 8.2%	47	45	58	+ 28.9%	21	30	31	+ 5.0%	0	0	0	- 12.2%
FI	367	364	358	- 1.8%	167	166	164	- 1.3%	146	145	142	- 2.1%	54	54	53	- 2.1%	1	1	1	- 5.3%
SE	556	549	565	+ 2.9%	226	231	240	+ 4.1%	221	219	215	- 1.8%	110	99	109	+ 10.7%	2	2	1	- 12.0%
EU	54 041	53 373	53 978	+ 1.1%	23 278	22 607	22 520	- 0.4%	20 968	21 033	20 921	- 0.5%	9 796	9 734	10 537	+ 8.3%	127	105	120	+ 13.7%



PRODUCTION

% EVOLUTION IN HEADS

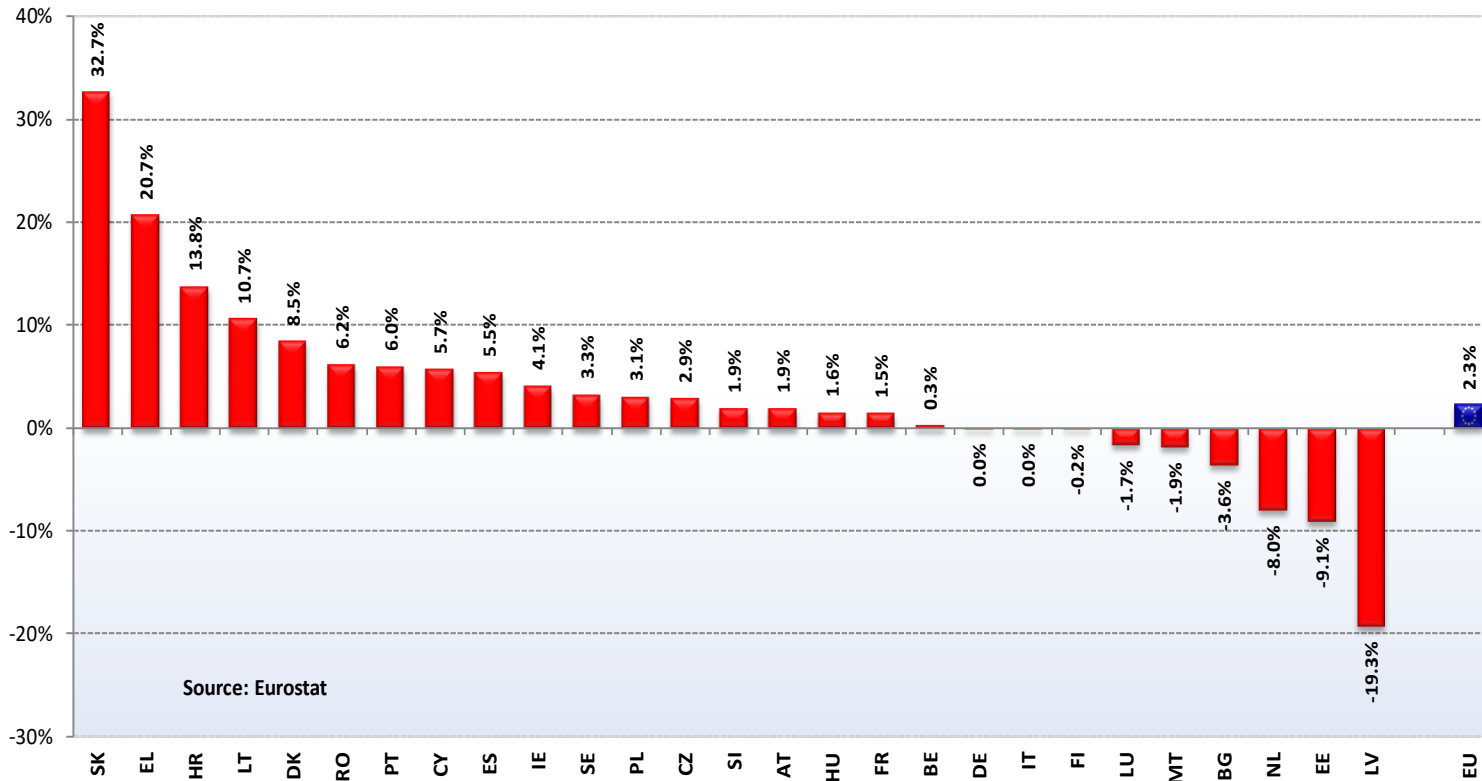
Change in Pig Slaughter ('000 Heads)
2026/2025 (up to March)



PRODUCTION

% EVOLUTION IN TONNES

Change in Pig Slaughter ('000 tonnes)
2026/2025 (up to March)



PRICES

	EU Prices	Week 23	Evolution since last week	Evolution since last month	Evolution since last year
Average (S-E)		163.5	+ 0.2%	- 1.7%	- 24.4%
Class S		165.2	+ 0.3%	- 1.4%	- 24.3%
Class E		160.4	- 0.0%	- 2.3%	- 24.6%
Piglet		52.9	- 1.4%	- 12.6%	- 30.3%

€/100 kg carcass weight

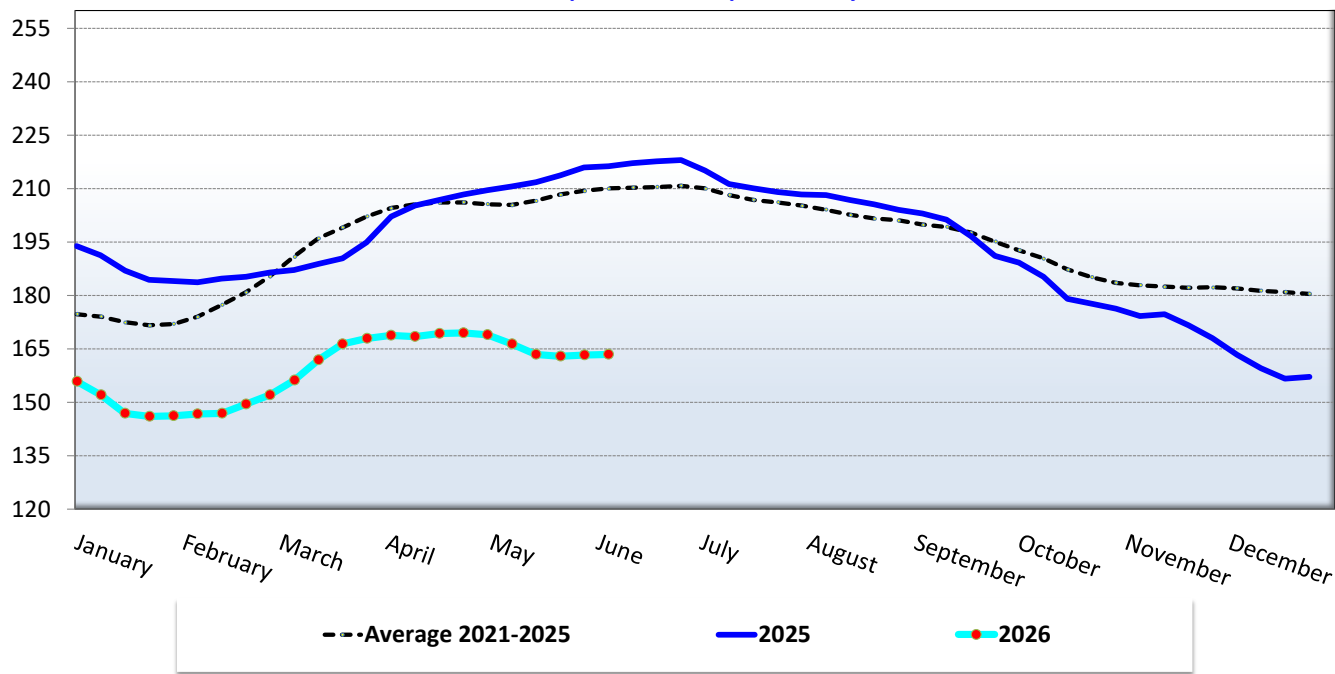
€/head

CARCASS PRICES

Evolution of the EU pig carcass prices (S & E average)

Week 23 latest price: 163.52 EUR/100 kg cw

Evolution compared to same period last year : - 24.4%



CARCASS PRICES

Classe S

May-2025 May-2026

EU	214.40	165.87
-----------	---------------	---------------

SE	262.33	252.88
MT	250.42	245.68
FI	213.67	204.30
AT	231.47	195.06
SI	232.84	194.80
LT	217.09	185.30
LV	223.07	179.62
IE	216.57	176.69
PT	235.83	176.58
DE	215.31	174.49
FR	202.55	167.00
ES	226.96	166.16
CZ	202.75	165.34
HU	210.17	165.21
BE	204.32	164.79
PL	217.84	163.17
SK	185.86	156.16
DK	209.74	154.10
HR	191.92	148.56
RO	189.54	131.94
NL	179.50	122.50

Classe E

May-2025 May-2026

EU	208.53	161.88
-----------	---------------	---------------

SE	258.09	247.25
MT	241.94	241.86
BG	213.86	214.22
FI	204.64	195.47
AT	220.84	186.35
LV	228.49	182.63
SK	199.00	181.27
SI	214.72	177.67
PT	237.02	177.04
LT	219.51	176.78
CY	182.48	175.96
IE	216.51	174.89
DE	212.34	171.07
EE	198.96	167.31
ES	217.82	161.98
BE	198.99	161.59
HU	206.48	161.56
CZ	197.98	161.43
FR	195.00	160.23
PL	215.95	159.53
DK	205.19	151.66
HR		150.67
RO		132.72

Classe R

May-2025 May-2026

EU	231.14	192.62
-----------	---------------	---------------

IT	235.42	202.35
LT	210.66	170.25
ES	224.34	165.87
DE	185.46	145.09
CZ	166.41	134.16



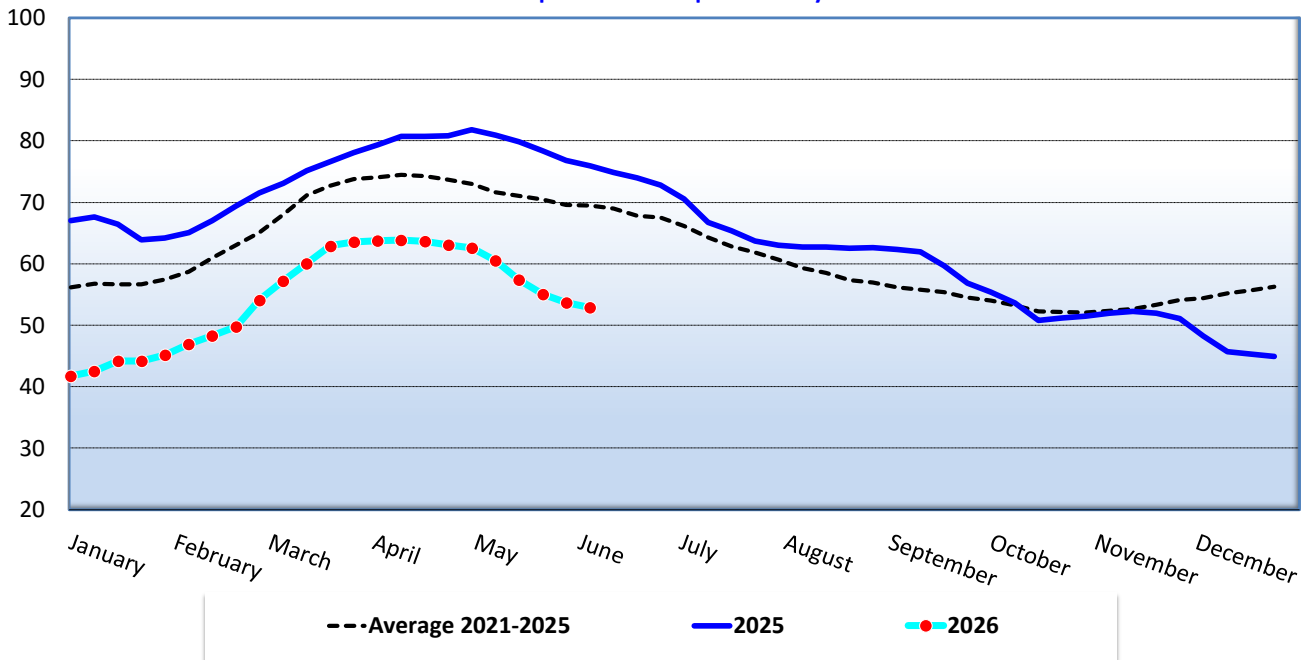
PIGLET PRICES

Evolution of the EU average piglet prices
(€/head)

Week 23 latest price: 52.92 EUR/head

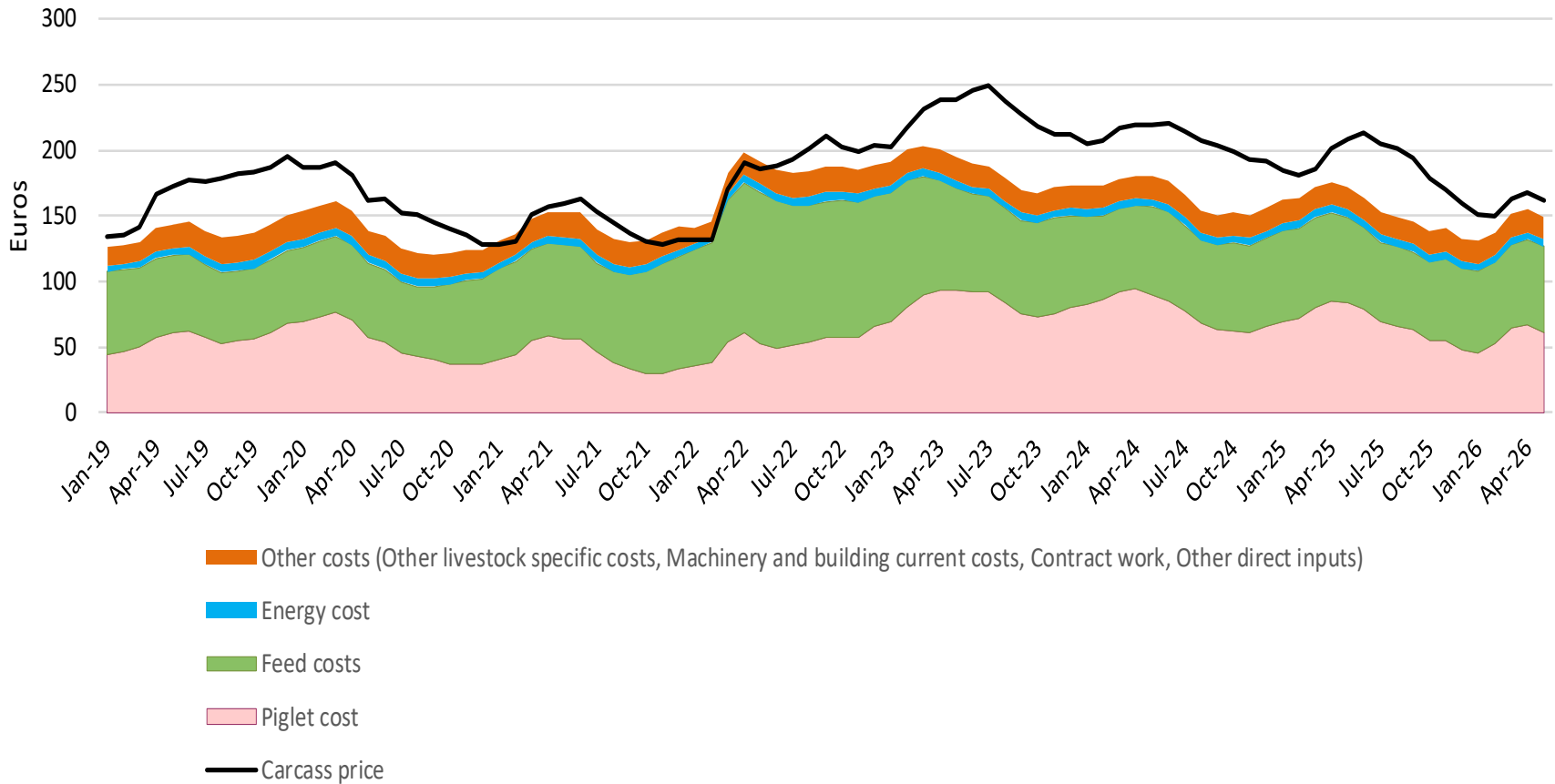
Evolution compared to same period last year : - 30.3%

Source: EU Commission DG AGRI



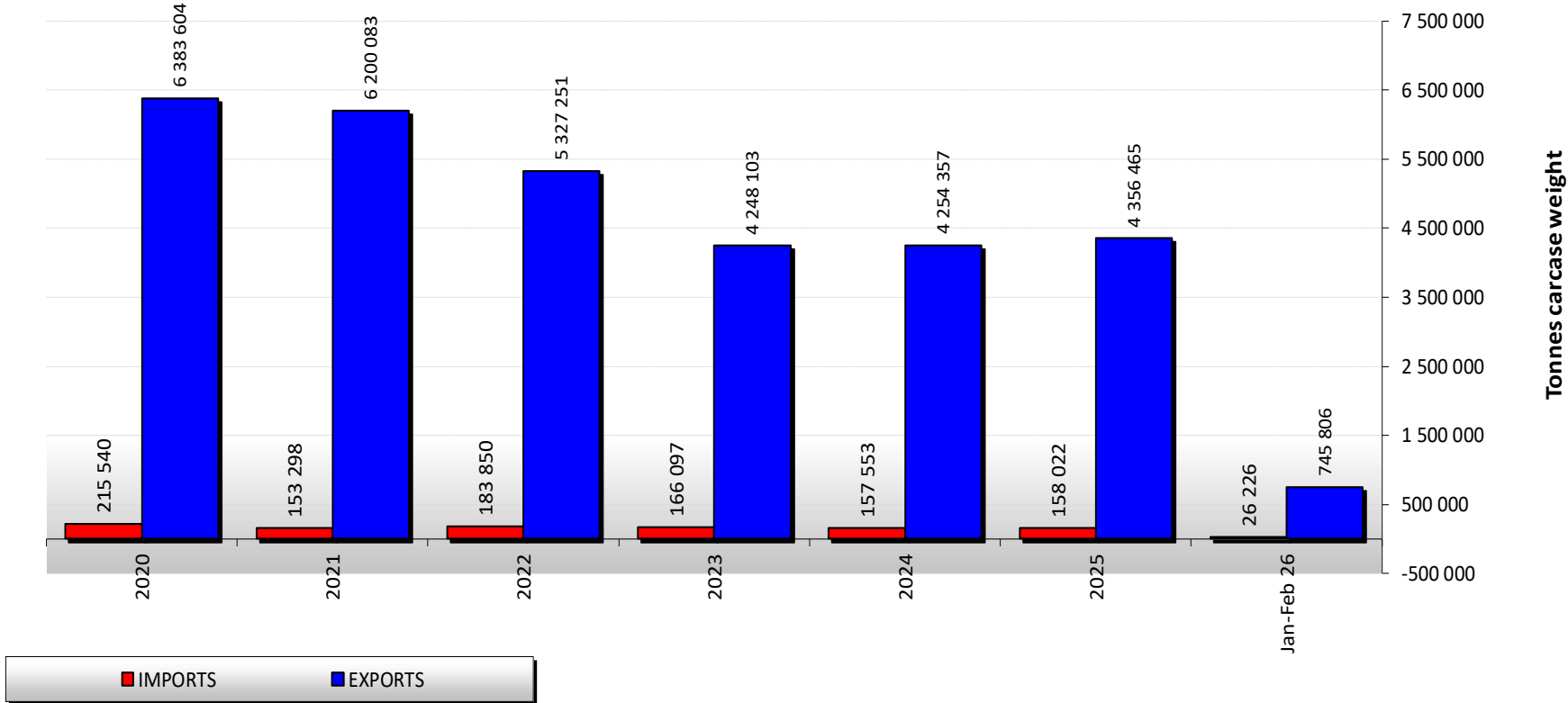
PIG FATTENING – COSTS VS. CARCASS PRICE

Pig fattening - costs vs. carcass price
(€ / 100 kg cwe)



EU TRADE BALANCE

EU Trade of PIG products (Quantity)

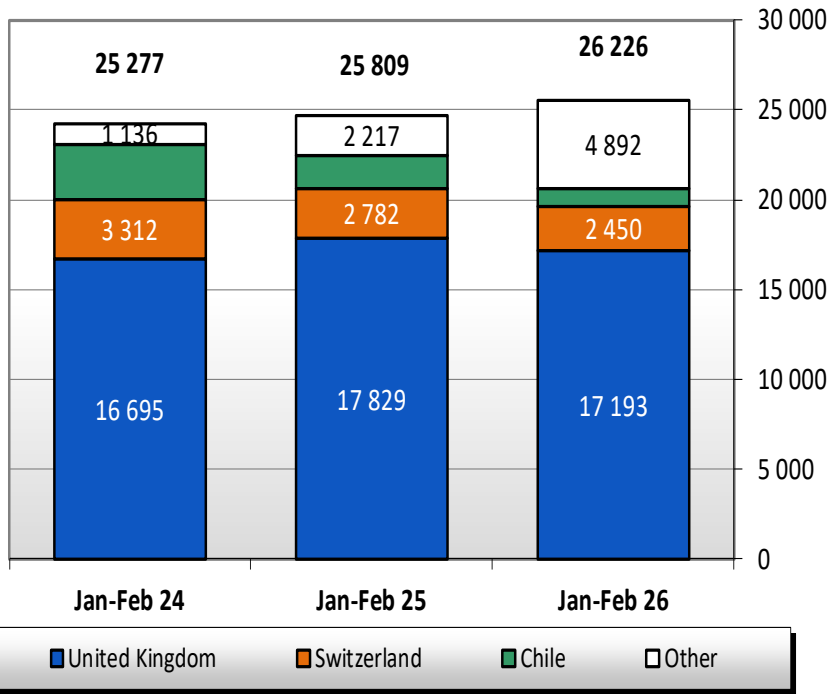


EU imports of selected PIG products (COMEXT – tonnes carcass weight)

	2022		2023		2024		2025		Jan-Feb 26		Compared to Jan-Feb 25
	tonnes	%	tonnes	%	tonnes	%	tonnes	%	tonnes	%	
United Kingdom	139 860	76.1%	110 111	66.3%	104 754	66.5%	104 620	66.2%	17 193	65.6%	- 3.6%
Switzerland	19 147	10.4%	23 699	14.3%	17 868	11.3%	15 738	10.0%	2 450	9.3%	- 11.9%
Chile	4 859	2.6%	14 472	8.7%	17 357	11.0%	10 713	6.8%	1 004	3.8%	- 45.6%
Norway	4 702	2.6%	4 910	3.0%	5 945	3.8%	6 744	4.3%	687	2.6%	- 39.6%
<i>Other Origins</i>	15 282	8.3%	12 905	7.8%	11 628	7.4%	20 206	12.8%	4 892	18.7%	
Extra-EU	183 850		166 097		157 553		158 022		26 226		
% change			- 10%		- 5%		+ 0%		+ 1.6%		

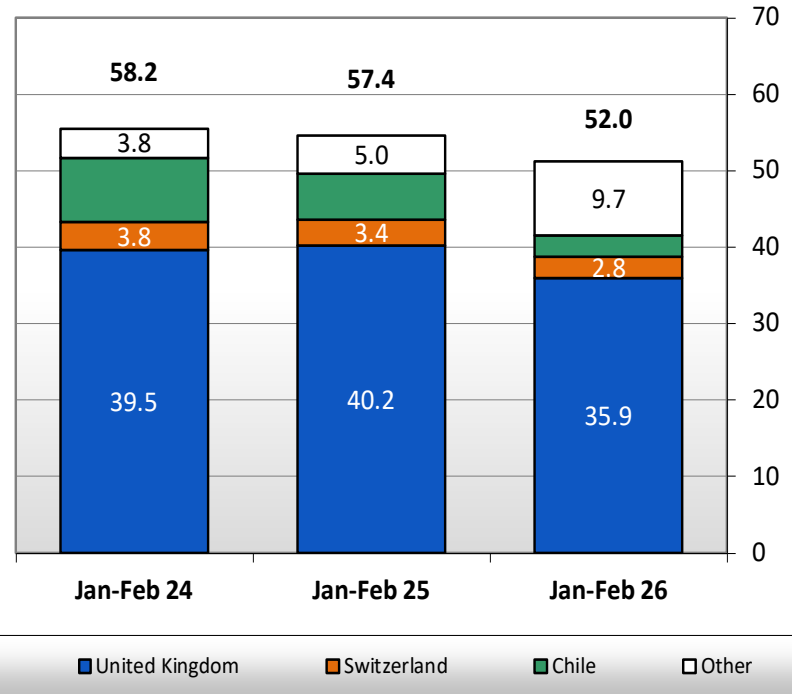
EU imports of selected PIG products (COMEXT – tonnes carcass weight)

IMPORTS of PIG Meat into EU (Tonnes c. weight)



EU*: without UK

IMPORTS of PIG Meat into EU (Millions EUR)



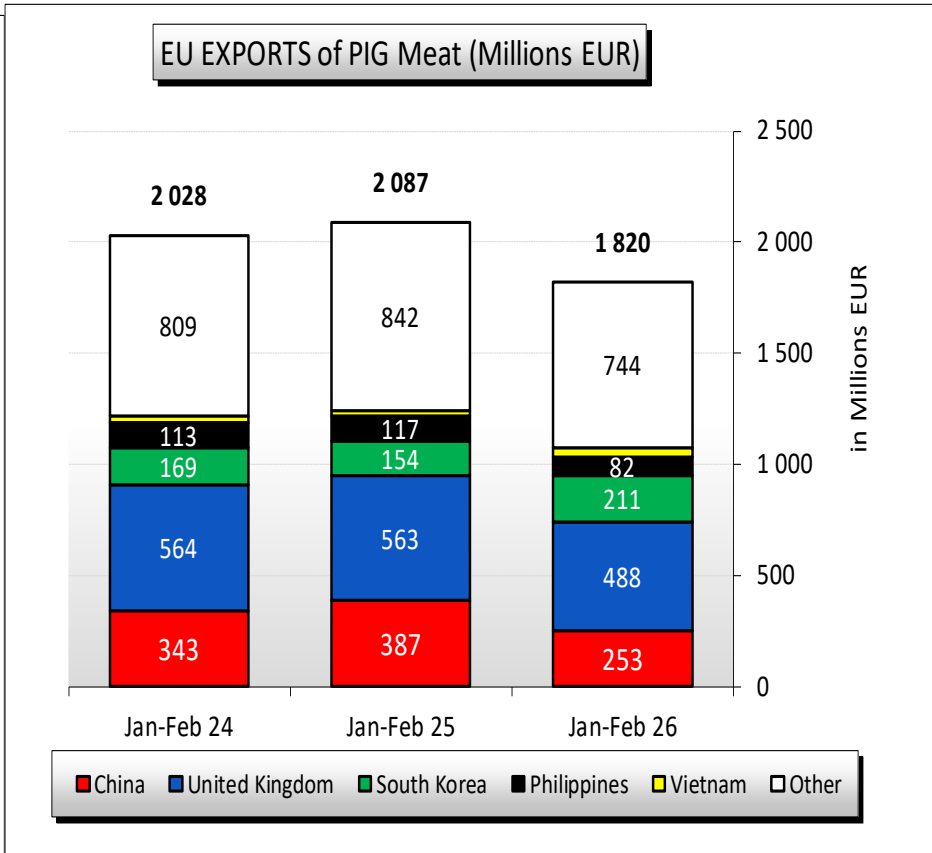
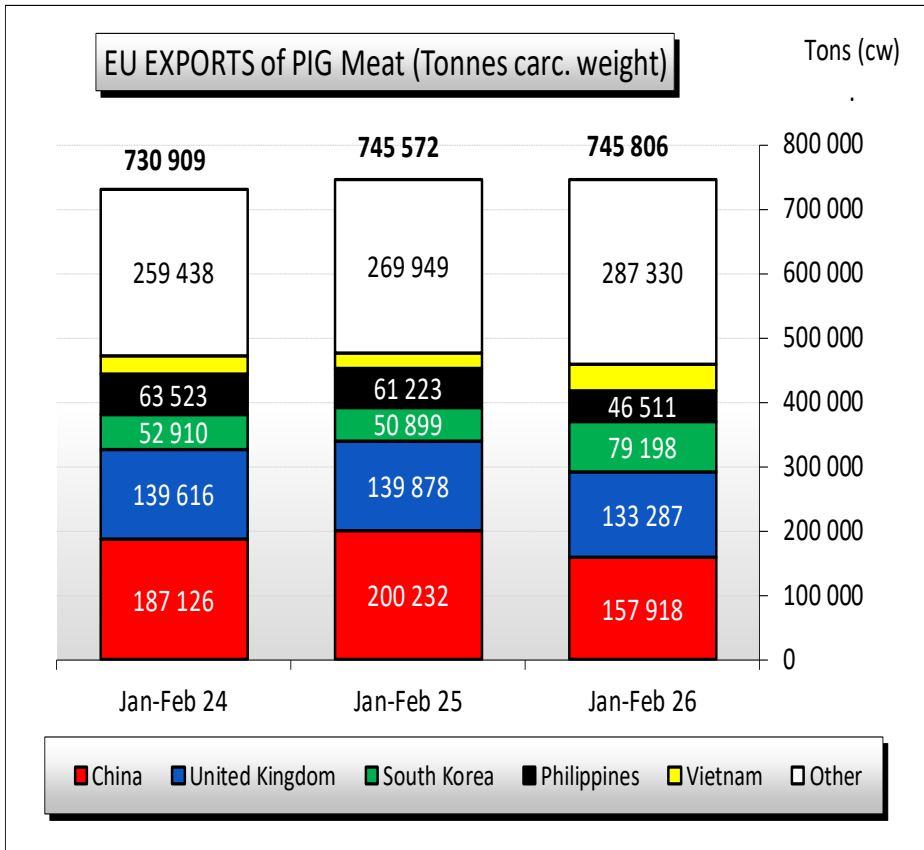
EU*: without UK



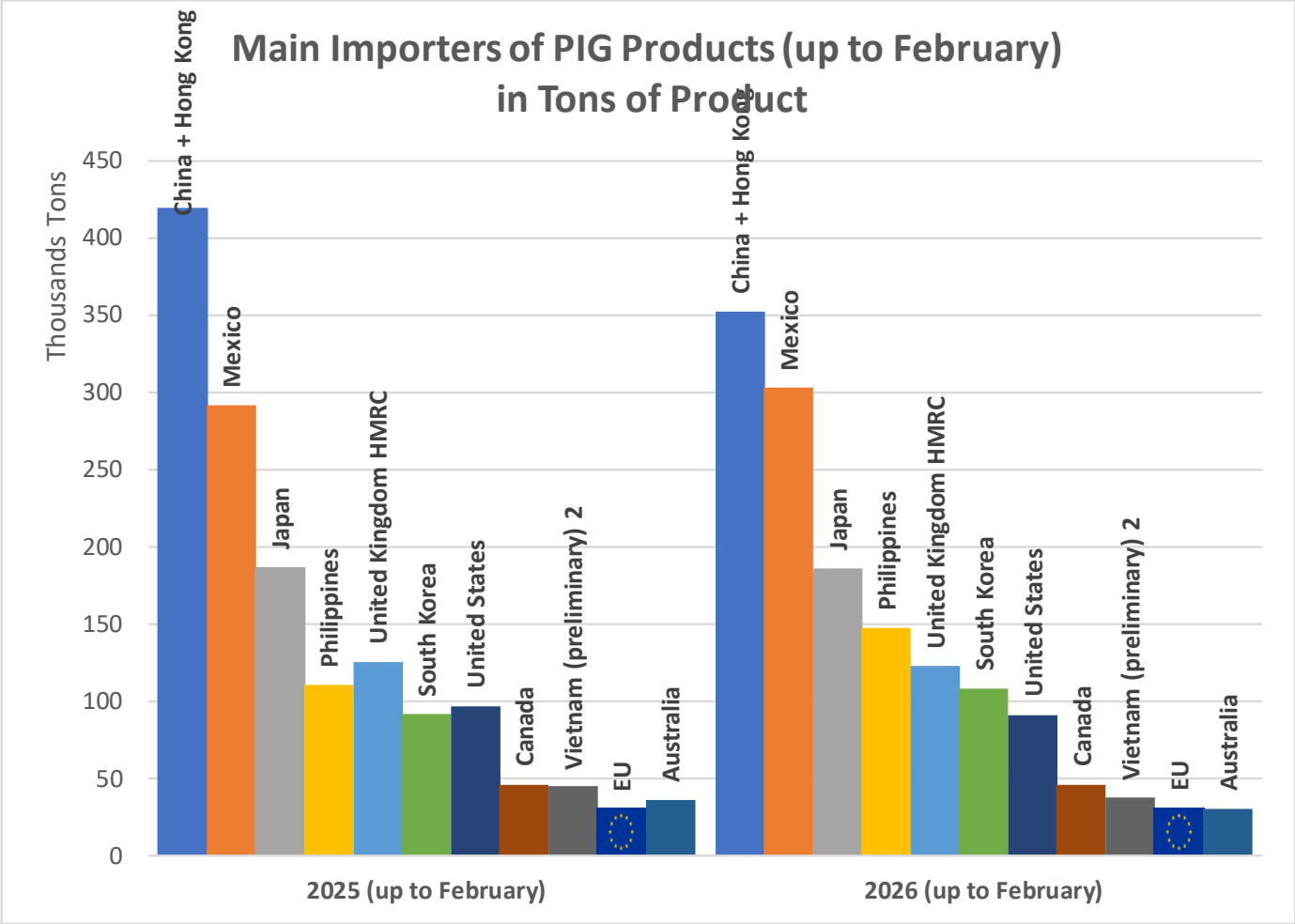
EU exports of selected PIG products (COMEXT – tonnes carcass weight)

	2022		2023		2024		2025		Jan-Feb 26		Compared to Jan-Feb 25
	tonnes	%	tonnes	%	tonnes	%	tonnes	%	tonnes	%	
China	1 553 389	29.2%	1 160 605	27.3%	1 122 052	26.4%	1 039 866	23.9%	157 918	21.2%	- 21.1%
United Kingdom	890 987	16.7%	902 349	21.2%	896 466	21.1%	865 568	19.9%	133 287	17.9%	- 4.7%
South Korea	320 506	6.0%	242 342	5.7%	250 962	5.9%	281 660	6.5%	79 198	10.6%	+ 55.6%
Philippines	428 670	8.0%	290 611	6.8%	362 995	8.5%	367 559	8.4%	46 511	6.2%	- 24.0%
Vietnam	89 650	1.7%	118 385	2.8%	136 403	3.2%	181 289	4.2%	41 562	5.6%	+ 77.7%
Japan	466 535	8.8%	356 047	8.4%	354 315	8.3%	275 668	6.3%	41 354	5.5%	- 23.8%
Ivory Coast	104 008	2.0%	80 733	1.9%	86 909	2.0%	109 221	2.5%	24 103	3.2%	+ 19.5%
Australia	157 372	3.0%	94 644	2.2%	99 892	2.3%	103 528	2.4%	20 922	2.8%	+ 29.3%
USA	135 555	2.5%	102 023	2.4%	113 810	2.7%	117 267	2.7%	18 735	2.5%	- 6.9%
Ukraine	103 051	1.9%	52 541	1.2%	26 190	0.6%	68 800	1.6%	14 037	1.9%	+++
Taiwan	82 172	1.5%	61 042	1.4%	49 636	1.2%	89 283	2.0%	13 195	1.8%	- 16.9%
Congo	55 374	1.0%	53 421	1.3%	57 496	1.4%	74 117	1.7%	11 486	1.5%	+ 9.3%
Congo (Dem. Rep.)	45 057	0.8%	27 398	0.6%	27 547	0.6%	44 763	1.0%	10 114	1.4%	+ 38.3%
Moldova	23 346	0.4%	16 955	0.4%	14 952	0.4%	24 602	0.6%	9 529	1.3%	+++
Singapore	36 217	0.7%	33 282	0.8%	31 732	0.7%	32 620	0.7%	8 969	1.2%	+ 82.5%
Hong Kong	78 583	1.5%	68 420	1.6%	52 687	1.2%	56 162	1.3%	8 622	1.2%	- 33.9%
New Zealand	46 134	0.9%	30 168	0.7%	36 551	0.9%	41 081	0.9%	8 503	1.1%	- 4.9%
<i>Other Destinations</i>	<i>710 647</i>	<i>13.3%</i>	<i>557 139</i>	<i>13.1%</i>	<i>533 762</i>	<i>12.5%</i>	<i>583 412</i>	<i>13.4%</i>	<i>97 761</i>	<i>13.1%</i>	
Extra-EU	5 327 251		4 248 103		4 254 357		4 356 465		745 806		
% change			- 20%		+ 0%		+ 2%		+ 0.0%		

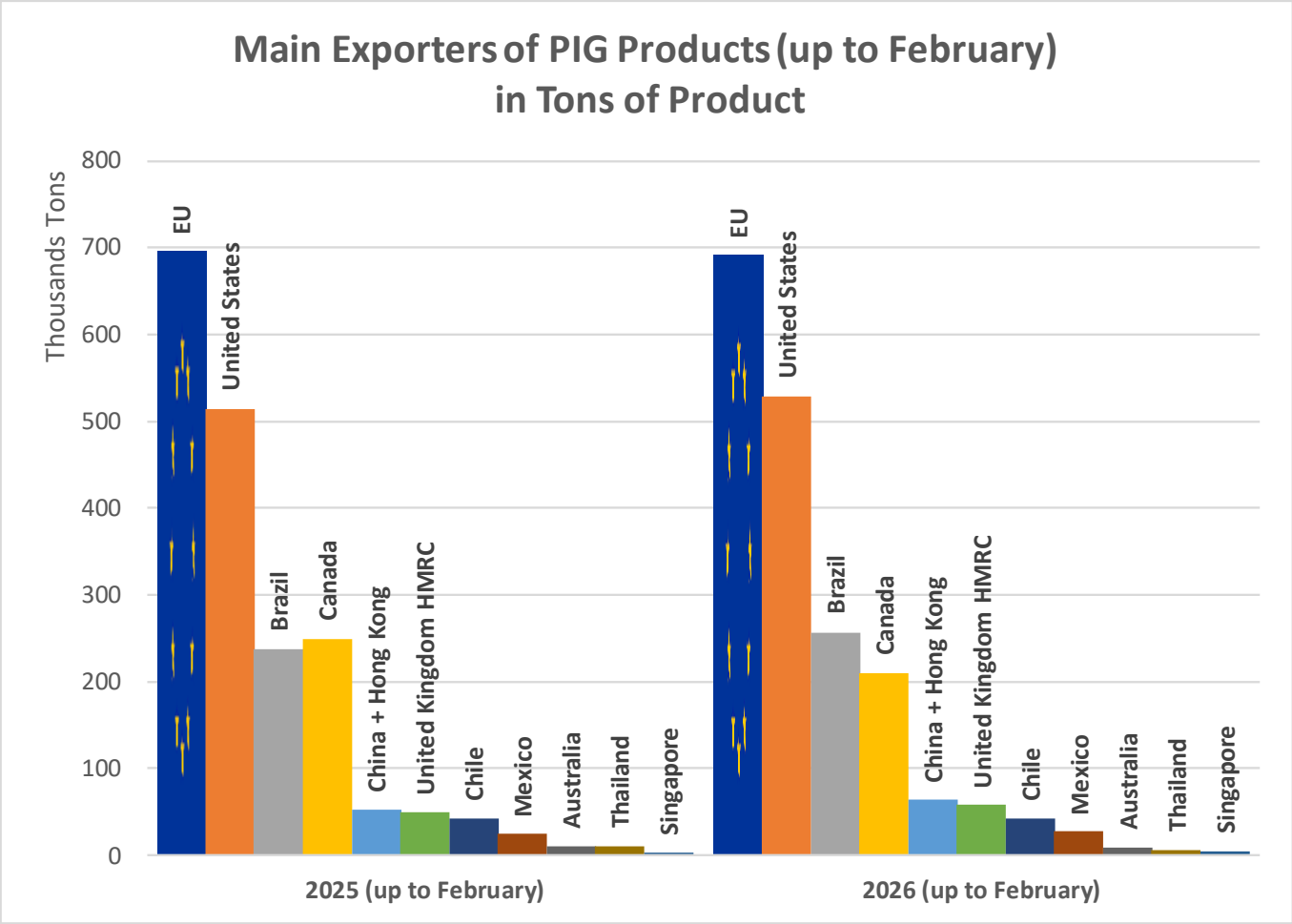
EU exports of selected PIG products (COMEXT – tonnes carcass weight)



WORLD PIGMEAT MAIN IMPORTERS



WORLD PIGMEAT MAIN EXPORTERS



WORLD PIGMEAT PRICES

World weekly average pigmeat prices 2024-2026 in EURO / 100 kg carcass weight
(EU, Brazil, USA and Canada)



Follow market updates via the Meat Market Observatory:

http://ec.europa.eu/agriculture/market-observatory/meat/index_en.htm

> Pigmear

and check the latest data on the Agri-Food Data Portal:

http://agridata.ec.europa.eu/extensions/DataPortal/agricultural_markets.html

> Pigmear

Thank you



© European Union 2025

Unless otherwise noted the reuse of this presentation is authorised under the [CC BY 4.0](https://creativecommons.org/licenses/by/4.0/) license. For any use or reproduction of elements that are not owned by the EU, permission may need to be sought directly from the respective right holders.

