

Governance

Belgian Feed Association (BFA)



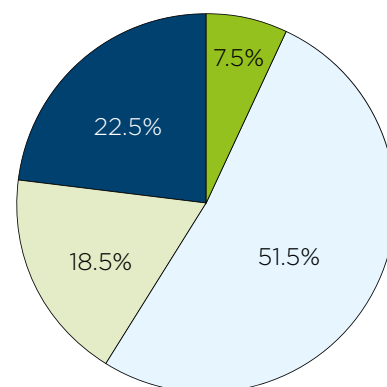
- 1944: creation of the Association Professionnelle des Fabricants D'Aliments Composés pour les Animaux (APFACA / BEMEFA)
- 2017: changes its name to the Belgian Feed Association (BFA)
- Member organisation with 138 members > **more than 95%** of national production
- Belgian BFA members' **export** = **15.5%**
- **4.701 billion turnover** = **9%** of total turnover of food industry
- **Employment:**

Food industry
± 150,000

Livestock feed sector
3,753

BFA
10

Belgian feed production in figures



- Pig feed
- Poultry feed
- Cattle feed
- Other feeds (e.g. petfood, ...)

► Production:

7,950,000
tonne
Raw materials

7,320,000
tonne
Produced feed

3,490,000
tonne
Co-products

* All figures concern the year 2020.

Our Mission

BFA's mission is to represent the interests of its members and to work towards the general social acceptance of sustainable animal feed production.

Our Vision

BFA and its members - the Belgian feed sector - are committed to providing products that contribute to safer and more sustainable feed and food.

Our DNA

- Sectoral operation
- Proactive and constructive approach
- Collaboration with stakeholders
- Solution-oriented

Governance Belgian Feed Association (BFA)

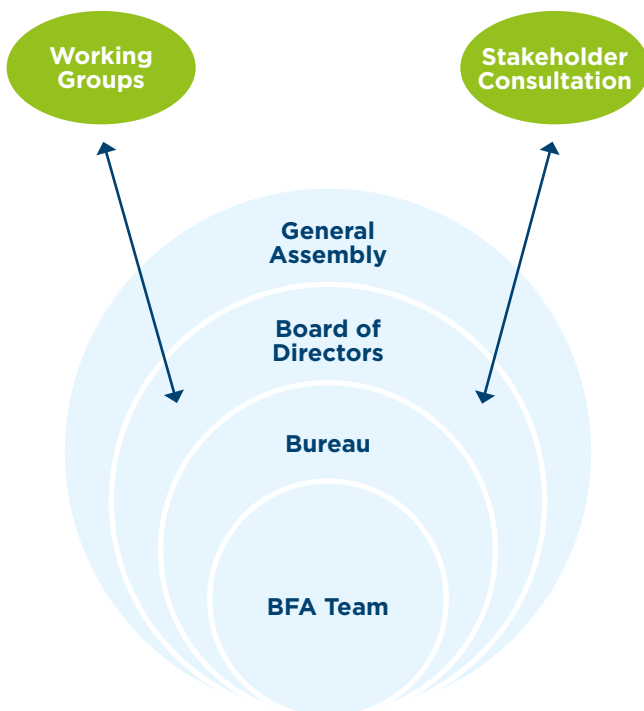


- We defend the interests of our members (manufacturers of basic and compound foods) at all levels of decision-making and consultation:
 - governments (regional, national, European)
 - agricultural organisations
 - research centres
 - other federations and organisations
- We are active in the various fields related to the Belgian feed sector.

In these areas, we seek targeted and structural solutions to the societal challenges facing the feed sector in order to create a framework in which a feed manufacturer can succeed.

- We are a service provider through collective advocacy, networking, dialogue, cooperation with others and development of own initiatives where BFA is unique and a leader.

Governance - Structure



Core business



BFA Working Groups

