

# Governance Belgian Feed Association (BFA)

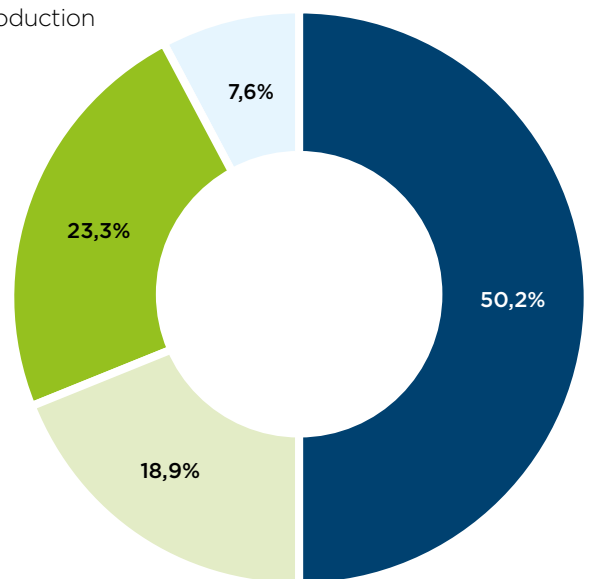


## Facts & Figures

- ▶ 1944: creation of the Association Professionnelle des Fabricants D'Aliments Composés pour les Animaux (APFACA / BEMEFA)
- ▶ 2017: name change to the Belgian Feed Association (BFA)
- ▶ Member organisation with 131 members > **more than 95%** of national production
- ▶ Belgian BFA members' **export = 17%**
- ▶ **6,9 billion turnover = 10%** of total turnover of food industry
- ▶ **Employment:**



**Belgian feed production in figures**



## ▶ Production:



- Pig feed
- Cattle feed
- Poultry feed
- Other feeds (e.g. petfood, ...)

\* All figures concern the year 2021.

### Our Mission

BFA's mission is to represent the interests of its members and to work towards the general social acceptance of sustainable animal feed production.

### Our Vision

BFA and its members - the Belgian feed industry - are committed to providing products that contribute to safer and more sustainable feed and food.

### Our DNA

- Sectoral operation
- Proactive and constructive approach
- Collaboration with stakeholders
- Solution-oriented

# Governance Belgian Feed Association (BFA)

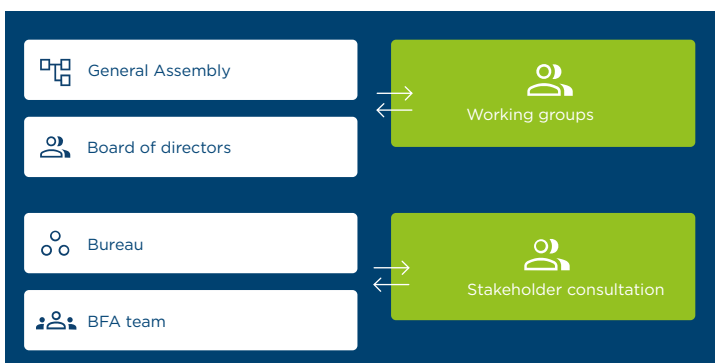


- ▶ We defend the interests of our members (manufacturers of basic and compound foods) at all levels of decision-making and consultation:
  - governments (regional, national, European)
  - agricultural organisations
  - research centres
  - other federations and organisations
- ▶ We are active in the various fields related to the Belgian feed sector.

In these areas, we seek targeted and structural solutions to the societal challenges facing the feed sector in order to create a framework in which a feed manufacturer can succeed.

- ▶ We are a service provider through collective advocacy, networking, dialogue, cooperation with others and development of own initiatives where BFA is unique and a leader.

## Governance - Structure



## BFA Working Groups

- Communication
- Export
- Manure & minerals
- Sustainability
- Core feed manufacturers
- Nutritionists
- Food Safety & Quality
- Intervention Fund Salmonella
- Animal health
- Environment

## Core business

